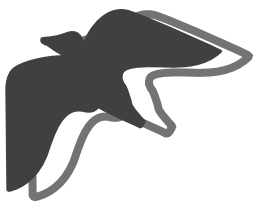

RISO Printer Driver

INSTALLATION GUIDE for MZ9/MZ7/RZ9/RZ5/RZ3/ RZ2/CZ Series

“RISO Printer Driver” CD-ROM version
For CD108B,CD110C,CD112D,CD105F
and later

The RISO logo, consisting of the word "RISO" in a stylized, bold, sans-serif font. The letters are interconnected, with the 'R' and 'I' sharing a vertical stroke, and the 'S' and 'O' sharing a vertical stroke.

Introduction

The RISO Printer Driver can be used only for the RISO printers. This installation procedure describes how to install the printer driver for windows when your computer and the RISO printer are connected.

- For the instructions to operate the printer driver, refer to “RISO Printer Driver User’s Guide” in the supplied CD-ROM.
- To install this RISO Printer Driver in computers running CD106B, CD108C, CD110D, CD103F or earlier versions of the driver, see the separately bound “RISO Printer Driver User’s Guide”.
- To install this RISO Printer Driver in computers running CD107B, CD109C, CD111D, CD104F versions of the driver, see the separately bound “RISO Printer Driver INSTALLATION GUIDE (Ms5709-52)”.
- To install this RISO Printer Driver in Mac OS, see the separately bound “RISO Printer Driver User’s Guide”.

This document is intended for use by RISO, its authorized dealers and purchasers of the equipment described herein. While every effort has been made to insure the accuracy of information contained in this document, RISO, its authorized dealers and their employees shall not be held responsible for any inaccuracies it may contain.

ALL SPECIFICATIONS ARE SUBJECT TO CHANGE WITHOUT NOTICE.

The screens used in this manual are now under development. Therefore, they might be different from the actual screens.

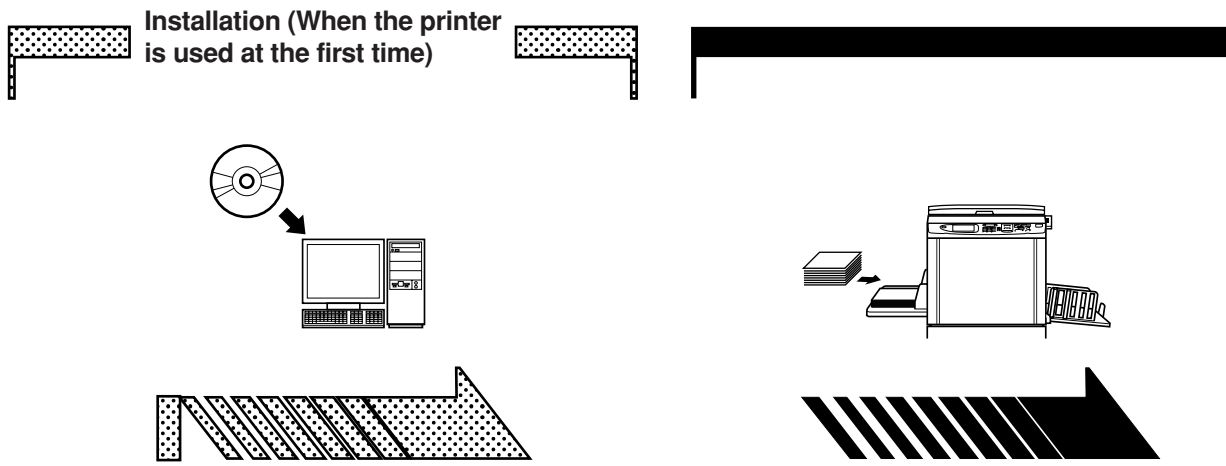
Reproduction or copying of this manual or any parts without permission is strictly prohibited. Although every effort has been made to ensure that the contents of this manual are error-free, please contact us if you notice any errors or other points which should be brought to the company’s attention.

Copyright © 2014 RISO KAGAKU CORPORATION, JAPAN

- Windows and Windows Vista are trademarks of Microsoft Corporation in the U.S.A. and other countries.
- Product names and company names that are referenced in this guide are (registered) trademarks of respective companies.
- The screens and content appearing in this manual may differ from the actual product.
- The screens and messages that appear in the procedure may differ depending on the type of printer, the equipment of option, the type of computer, and applications, etc.

Procedure before printing

Before you use the printer at the first time, carry out the installation procedure below. After installation, follow the printing operation procedure. Then, you can print out the documentation data.



Installation (When the printer is used at the first time)

Installing the Printer Driver

Install the RISO Printer Driver into your computer. [Page 7](#)

- Depending on the connecting method, your computer needs to be connected to the printer in advance.

1. Preparing for the printer

Prepare for the printer and put the print paper suitable for the original data to be printed out onto the standard (multipurpose) tray.

- For the preparation method for the printer, read the user's guide of the RISO printer.

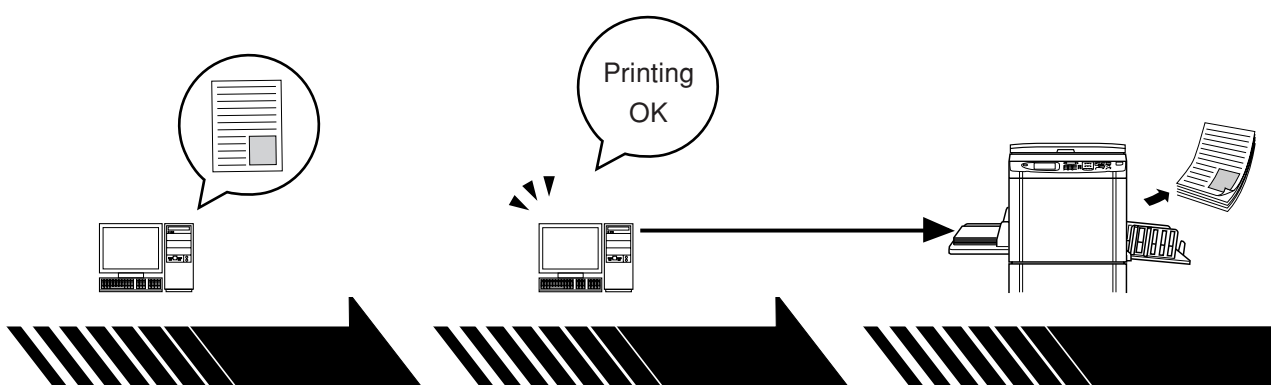
OS Support

This Printer Driver supports following OS:

Windows® 2000/Windows® XP (32-bit)/Windows Vista® (32-bit/64-bit)/
Windows® 7 (32-bit/64-bit)/Windows® 8 (32-bit/64-bit)*/Windows® 8.1
(32-bit/64-bit)*

* Only compatible with desktop app.

Basic operation



2. Setting

Open the original data you want to print out with your computer, and make necessary settings for printing.

3. Printing

When you give print instructions by the [Print] dialog box on your computer, the data is transmitted to the printer.

4. Completion of printing

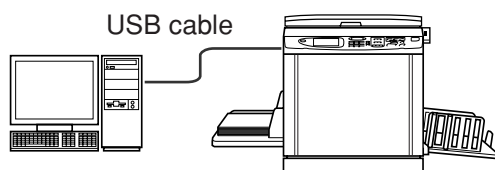
The printer receives the data and makes master and prints out the data.

Connection Methods

The printer driver installation procedure differs depending on the method of connecting your computer to the printer. Check the connection method.

- **Connection via USB Cable** [Page 8](#)

Some models of the MZ7/RZ5/RZ3/RZ2/CZ series do not support USB cable connection.



- **Connection via Other Cables** [Page 24](#)

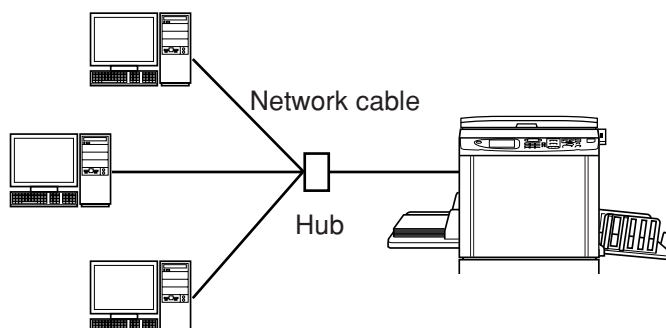
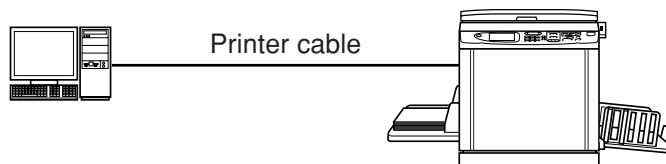


Table of Contents

Introduction	1
Procedure before printing	2
Connection Methods	4
Table of Contents	5

Installing the Printer Driver

■ Connection via USB Cable	8
Installing the Printer Driver	8
Creating a USB port	22
USB Device Association	23
■ Connection via Other Cables	24
Connecting with PC	24
Installing the Printer Driver	25

Uninstalling the Printer Driver

■ Uninstall the Printer Driver	38
---	-----------

Manually installing / uninstalling the Printer Driver

For Windows 2000 / Windows XP

■ Manual installation	42
Connection via USB Cable	42
Connection via Other Cables	43

■ Manual uninstallation	44
--------------------------------------	-----------

For Windows Vista

■ Manual installation	45
Connection via USB Cable	45
Connection via Other Cables	47

■ Manual uninstallation	48
--------------------------------------	-----------

For Windows 7

■ Manual installation	49
Connection via USB Cable	49
Connection via Other Cables	51

■ Manual uninstallation	52
--------------------------------------	-----------

For Windows 8 / Windows 8.1

■ Manual installation	53
Connection via USB Cable	53
Connection via Other Cables	55

■ Manual uninstallation	56
--------------------------------------	-----------

Installing the Printer Driver

The method of installing the Printer Driver using the installer is described here.

- When connecting your computer to the printer via USB cable, read “Connection via USB Cable” (see [Page 8](#)).
- When connecting your computer to the printer via a printer cable or a network cable, read “Connection via Other Cables” (see [Page 24](#)).
- To install this RISO Printer Driver in Mac OS, see the separately bound “RISO Printer Driver User’s Guide”.

■ Connection via USB Cable	8
Installing the Printer Driver	8
Creating a USB port	22
USB Device Association	23
■ Connection via Other Cables	24
Connecting with PC	24
Installing the Printer Driver	25

■ Connection via USB Cable

Installing the Printer Driver

This section describes how to install the Printer Driver for windows supporting the Plug&Play installation when your computer and the RISO printer are connected via USB cable.

IMPORTANT!

- Some models of the MZ7/RZ5/RZ3/RZ2/CZ series do not support USB cable connection.
- You are required to have the administrator's privilege to install the printer driver program in your computer.
- This Printer Driver does not support server OS or printer sharing.
- Use a commercially available USB cable (Hi-speed USB, 3 m or less).

For Windows Vista/Windows 7/Windows 8/Windows 8.1
To update the Printer Driver, change cable connections or reinstall a Printer Driver of the same series, deletion of the driver package is required. Uninstall the installed Printer Driver manually before new installation. "Manual Uninstallation" ([Page 52](#))

0

Make sure that the printer is turned off and that the computer and printer are not connected by a USB cable.

IMPORTANT!

At some point during the installation procedure (step 7/8) you will need to connect the USB cable and turn the printer on.

For Windows Vista(64-bit)/Windows 7(64-bit), create a USB port ([Page 22](#)) in advance.

1

Insert the [RISO Printer Driver] CD-ROM into your computer's CD-ROM drive.

The installer is started. When the installer is not started, double-click the [Setup (.exe)] file in CD-ROM.

For Windows 2000/Windows XP/Windows Vista(32-bit)/Windows 7(32-bit)/Windows 8(32-bit)/Windows 8.1(32-bit):

(CD-ROM):[Windows 32-bit] folder

For Windows Vista(64-bit)/Windows 7(64-bit)/Windows 8(64-bit)/Windows 8.1(64-bit):

(CD-ROM):[Windows 64-bit] folder

NOTE If the [User Account Control] dialog appears, click [Allow] (for Windows Vista) or [Yes] (for Windows 7/Windows 8/Windows 8.1).

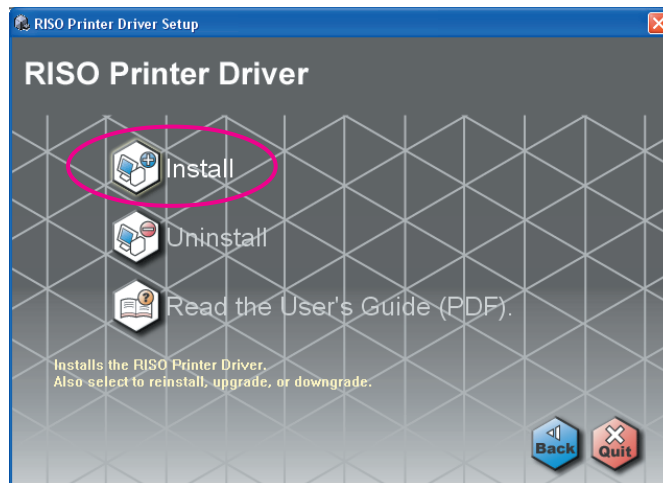
2

Click on your language button.



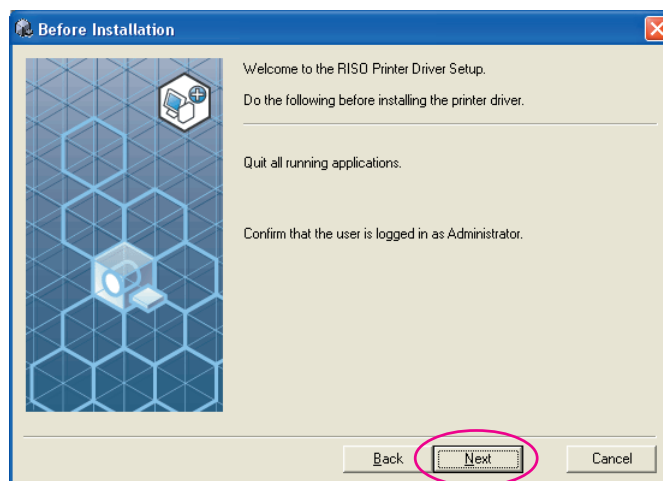
3

Click [Install].



4

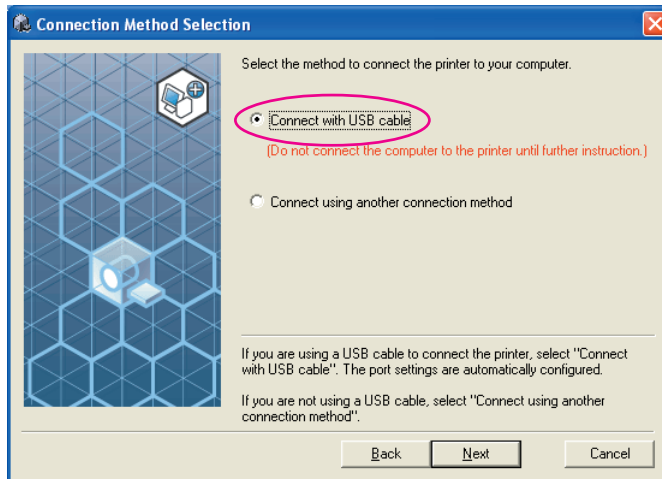
Click [Next].



For Windows Vista (64-bit) or Windows 7 (64-bit), go to Step **18** (Page 15).

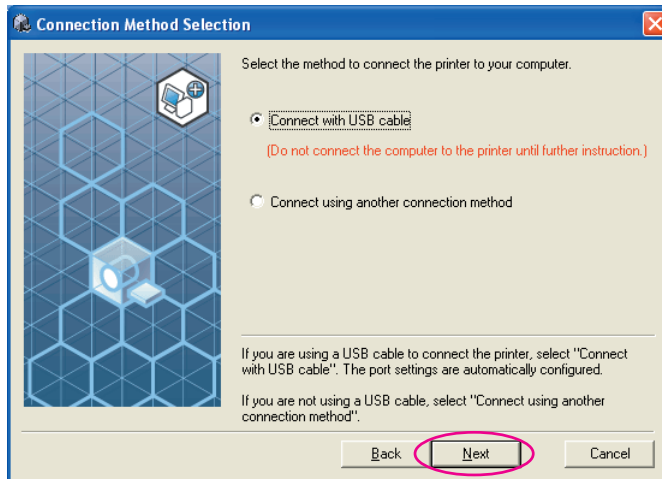
5

Select [Connect with USB cable].



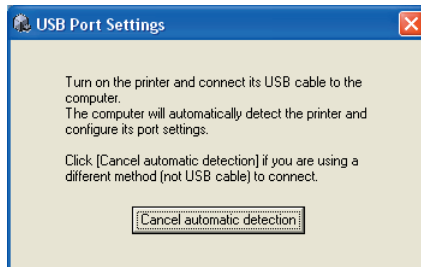
6

Click [Next].



For Windows 8/Windows 8.1, go to Step 25 (Page 18).

The [USB Port Settings] dialog box appears.



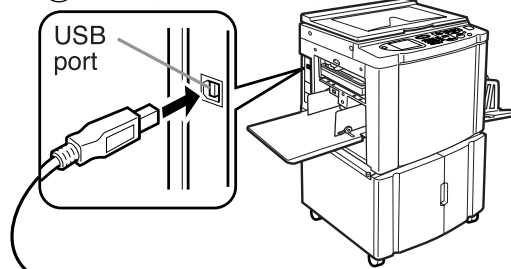
7

Turn on the RISO printer.

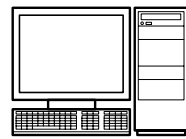
8

Connect the computer to the RISO printer with a USB cable (Hi-Speed USB, 3 m or less).

① To the printer's USB port



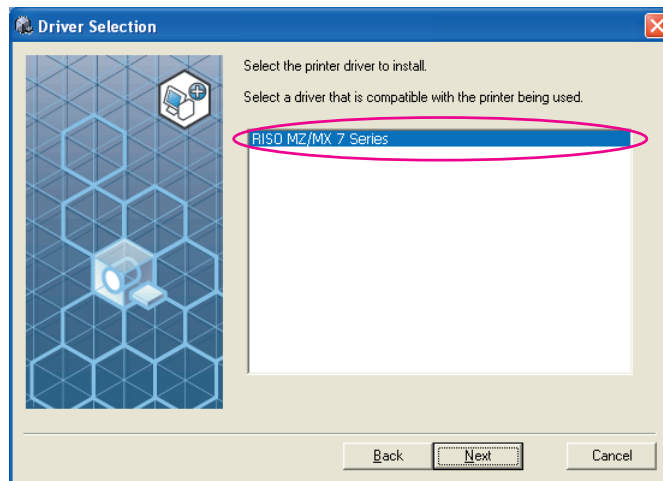
② To the PC's USB port



USB cable : 3 m or less

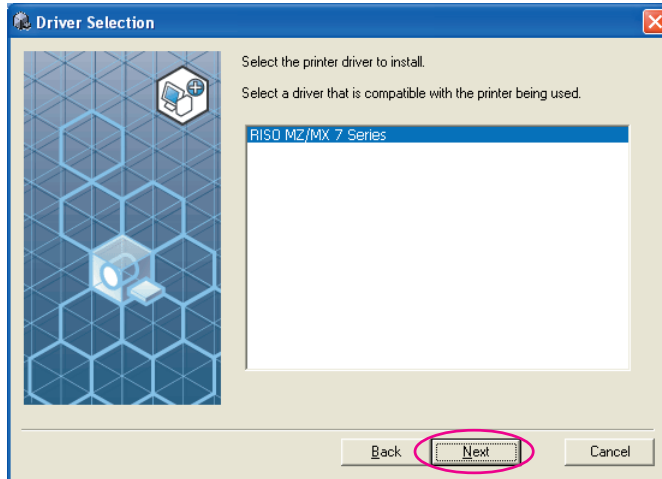
9

Select the printer name you just connected.

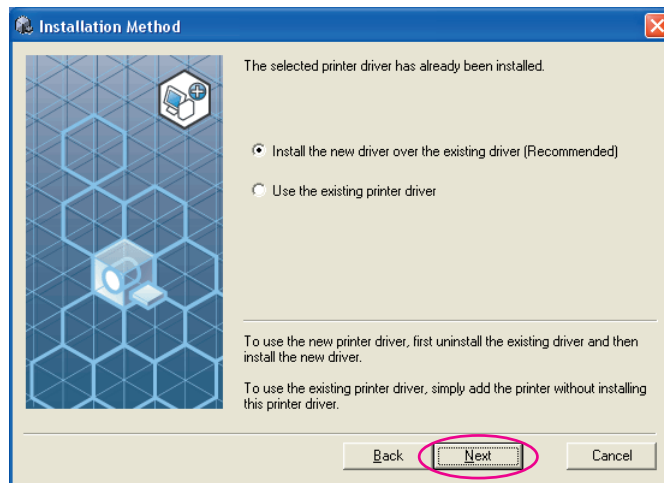


10

Click [Next].



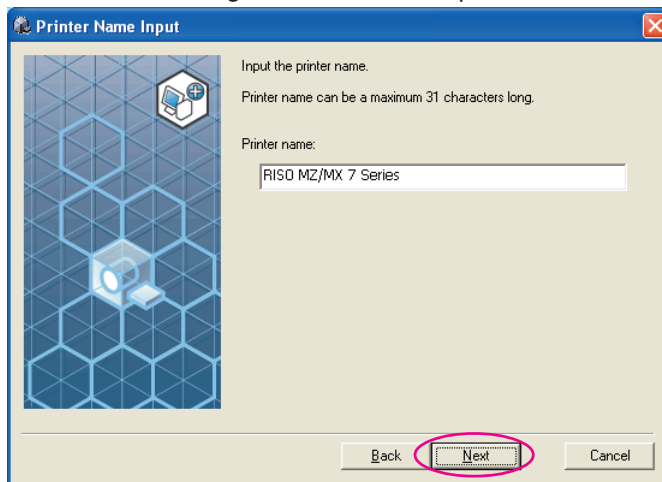
NOTE When the selected printer driver has already been installed in Windows 2000/ Windows XP, [Installation Method] dialog appears. Click [Next].

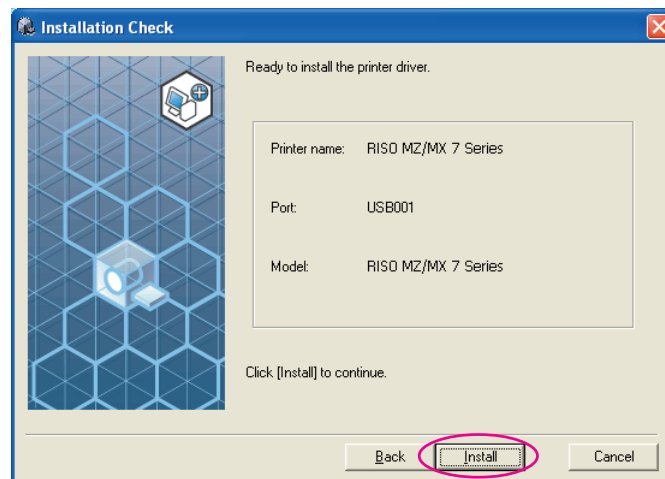


11

Click [Next].

You can also change the name of the printer.



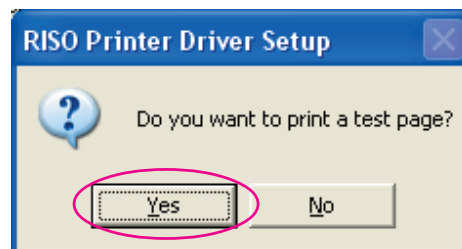
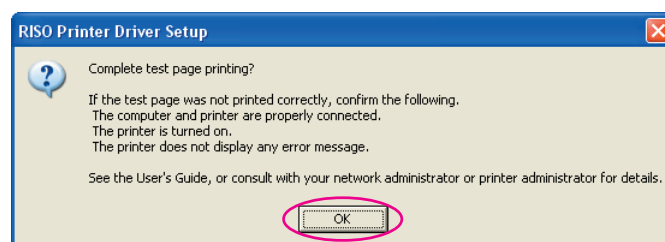
12**Click [Install].**

NOTE When the [Digital Signature Not Found] (for Windows 2000), [Windows Logo Approval Test] (for Windows XP) or [Windows Security] (for Windows Vista/Windows 7) dialog appears, continue with installation.

13**[Do you want to print a test page?] appears, then click [YES].**

Set A4/Letter paper in the printer beforehand.

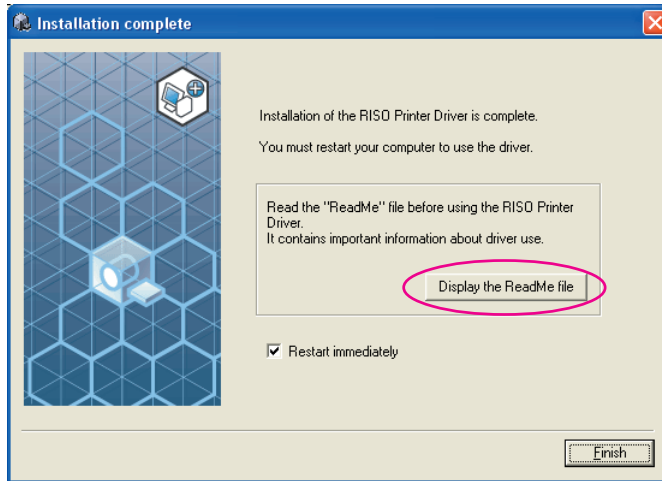
NOTE Load paper with the short edge first.

**14****Check the test print was properly printed and click [OK].**

15

Click [Display the ReadMe file].

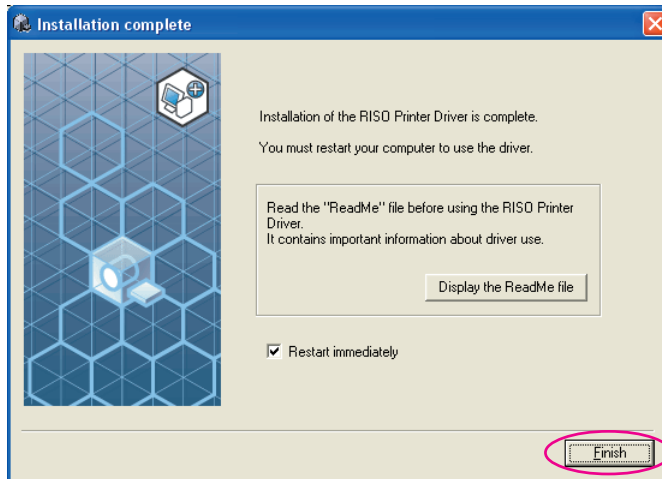
The ReadMe file is opened. Be sure to read all the instructions and notes on it.



16

Click [Finish].

Be sure to restart the computer before using the Printer Driver. If you have checked [Restart immediately], the computer will be shut down and restarted when you click [Finish].



NOTE When [Found New Hardware Wizard] is displayed, click [Cancel].

17

Then remove the [RISO Printer Driver] CD-ROM from the CD-ROM drive of your computer.

IMPORTANT!

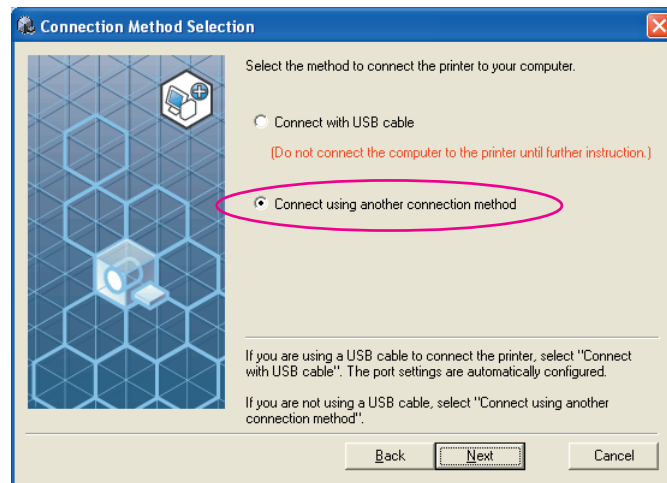
Keep the removed CD-ROM at hand.

Printer driver installation is now completed.
If using Windows Vista (64-bit)/Windows 7 (64-bit), associate USB Devices (Page 23) continuously.

For Windows Vista(64-bit) or Windows 7(64-bit)

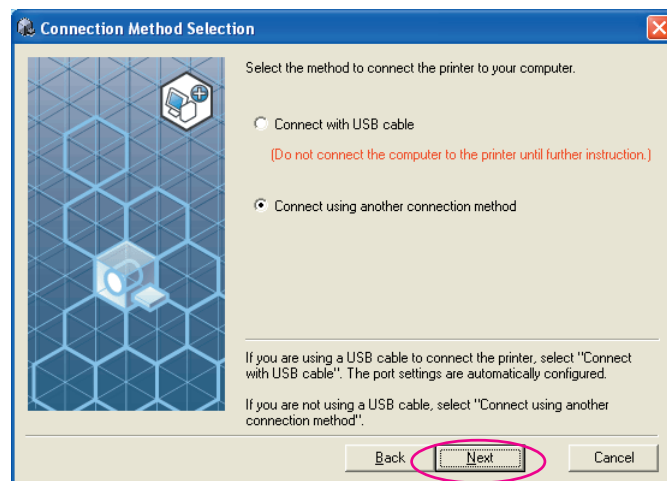
18

Select [Connect using another connection method].



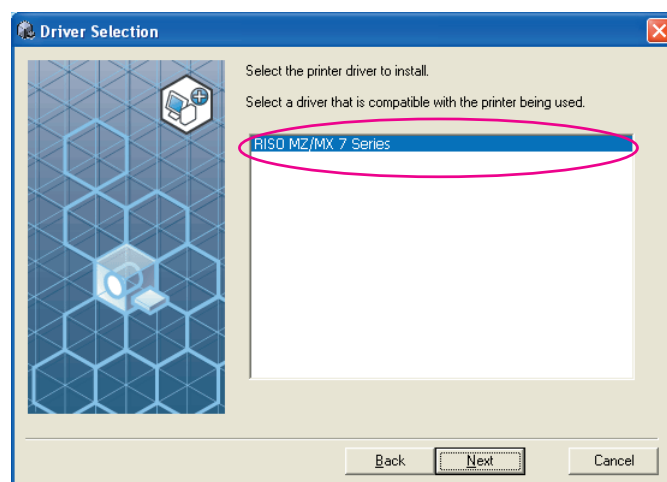
19

Click [Next].



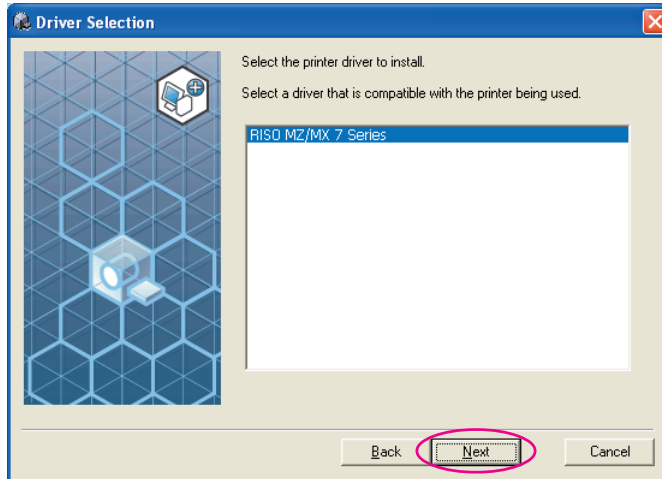
20

Select the printer name you just connected.

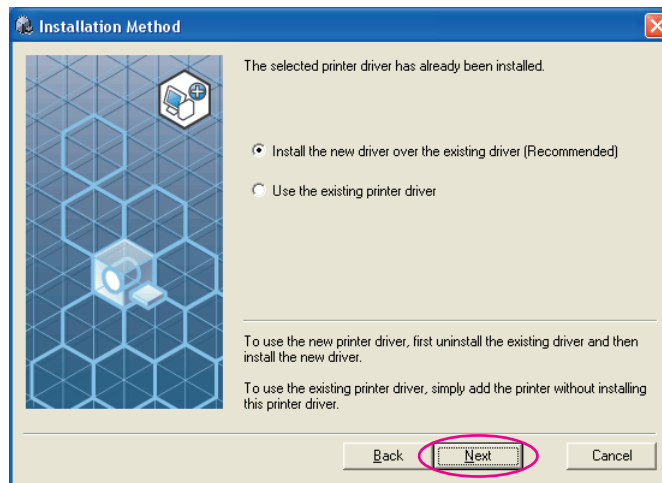


21

Click [Next].



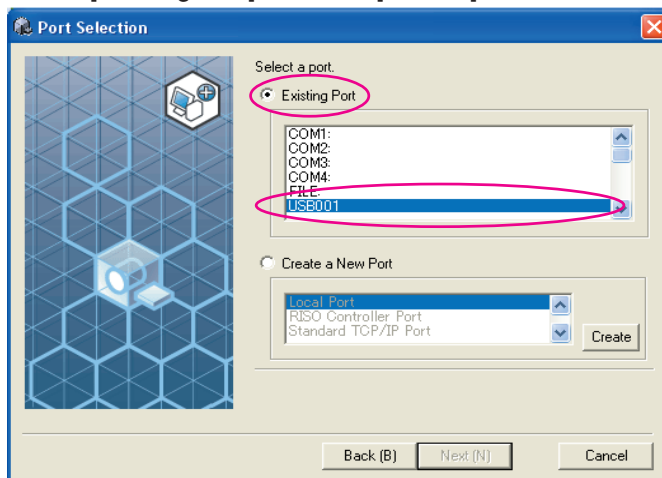
NOTE When selected Printer Driver has already been installed, [Installation Method] dialog appears. Click [Next].

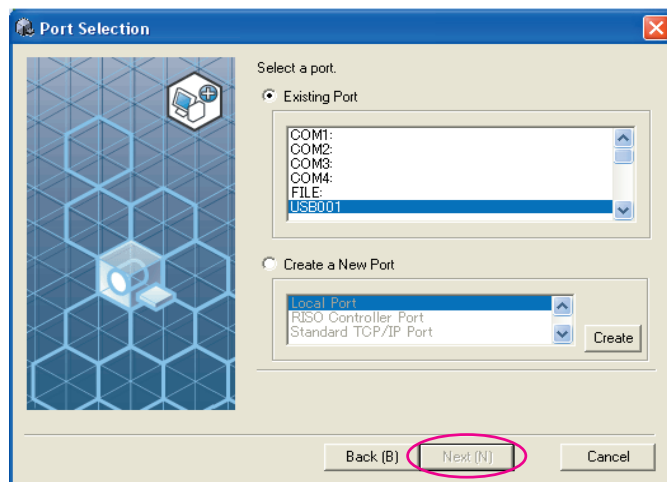


22

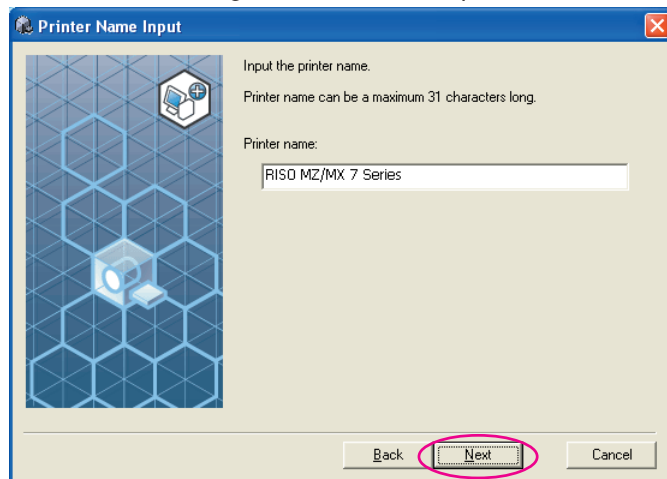
Select the USB port.

Select [Existing Port] and then [USB***].



23**Click [Next].****24****Click [Next].**

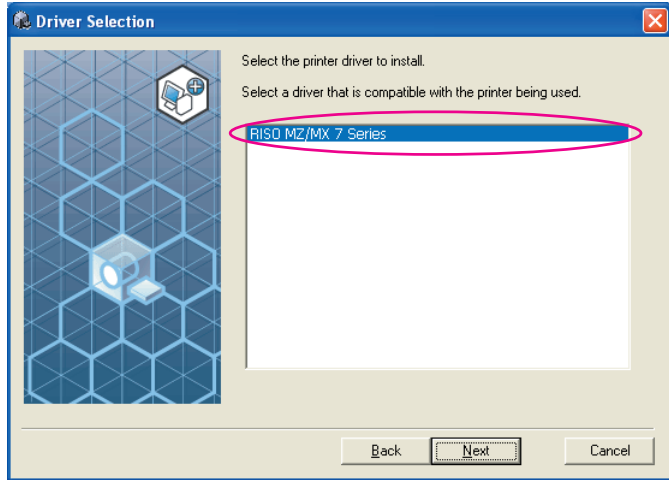
You can also change the name of the printer.

Return to Step **12** (Page 13).

For Windows 8/Windows 8.1

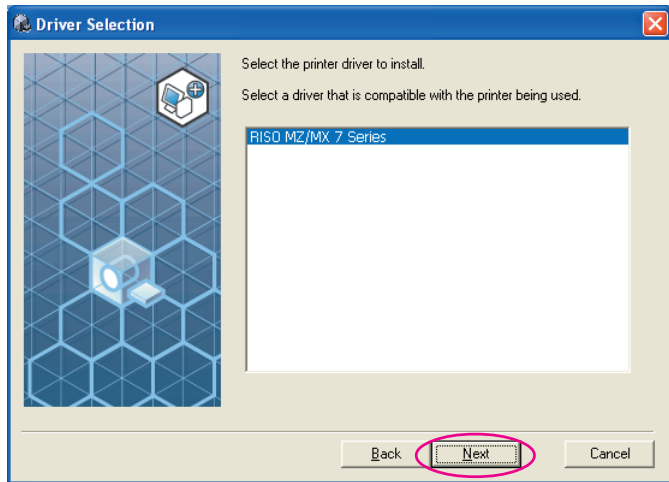
25

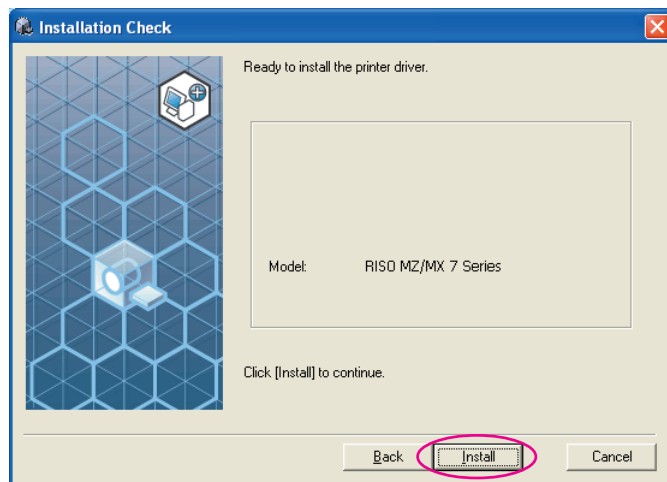
Select the printer name you just connected.



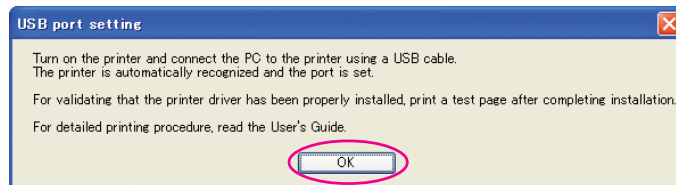
26

Click [Next].



27**Click [Install].****NOTE** [Windows Security] dialog appears, continue with installation.

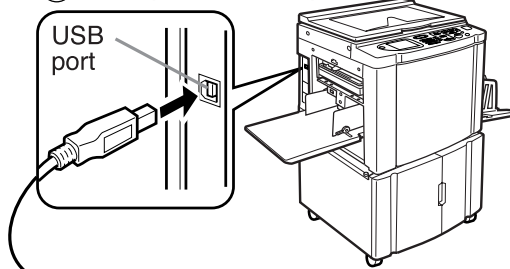
The [USB Port Settings] dialog box appears.

28**Click [OK].****29****Turn on the RISO printer.**

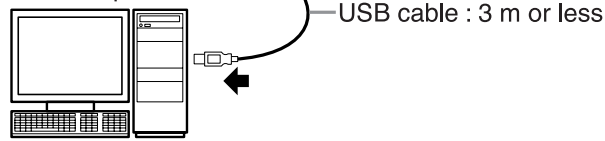
30

Connect the computer to the RISO printer with a USB cable (Hi-Speed USB, 3 m or less).

① To the printer's USB port



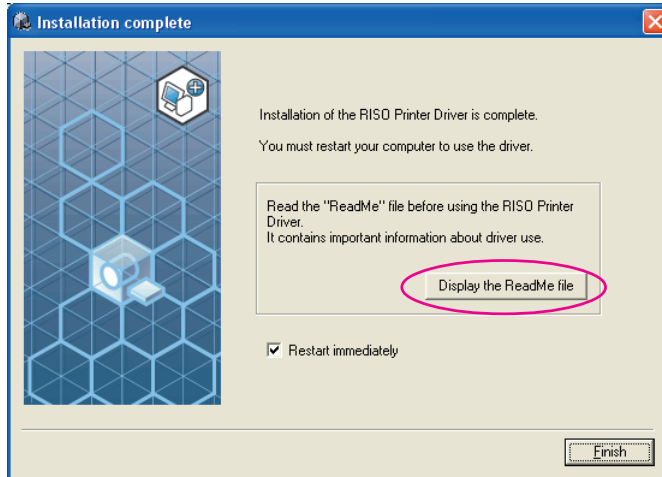
② To the PC's USB port



31

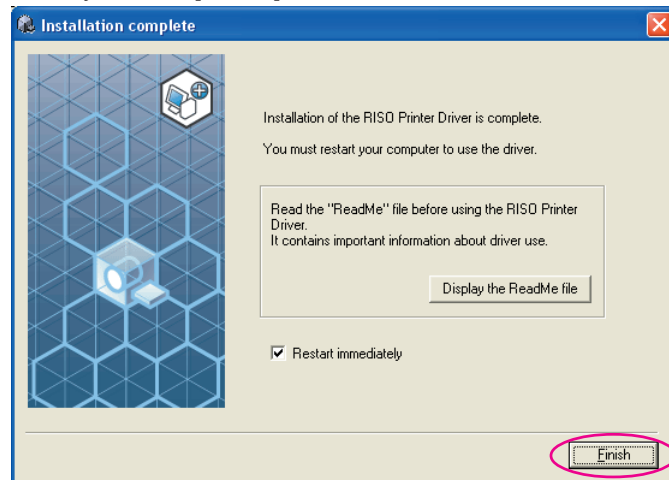
Click [Display the ReadMe file].

The ReadMe file is opened. Be sure to read all the instructions and notes on it.



32**Click [Finish].**

Be sure to restart the computer before using the Printer Driver. If you have checked [Restart immediately], the computer will be shut down and restarted when you click [Finish].

**33****Open the print folder.**

Open the “Apps” screen and click [Control Panel]-[Hardware and Sound]-[Devices and Printers].

34**Open the properties of the printer to which the Printer Driver has been installed.**

Right-click on the icon of the printer, and select [Printer Properties] in the displayed menu.

35**Click [Print Test Page].****36****When a message appears, wait for a few seconds and click [Close].****37****Then remove the [RISO Printer Driver] CD-ROM from the CD-ROM drive of your computer.****IMPORTANT!**

Keep the removed CD-ROM at hand.

Printer driver installation is now completed.

Creating a USB port

To install the printer driver in Windows Vista(64-bit) or Windows 7(64-bit) with the USB cable, it is necessary to create a USB Port and associate USB Devices.

IMPORTANT!

Create a USB port before installing the printer driver.

1 Turn the power of the printer on, and connect the USB cable to the printer.

2 Start your computer.

3 Connect the USB cable to your computer.

A USB port is automatically created. Check the USB port in Step **4** and after.

IMPORTANT!

Make sure that the message “Device driver software was not successfully installed” appears. This message appears in the dialog box for Windows Vista and in the task tray of Windows 7.

NOTE When “Found New Hardware Wizard” appears in Windows Vista, select “I’ll recheck later.”

4 Open [Print Server Property].

For Windows Vista:

- ① Click on the [Start] icon-[Control Panel]-[Hardware and Sound] and [Printers] to open the [Printers] folder.
- ② Right-click on a blank area in the folder to display the menu and select [Run as administrator] - [Server properties] from the menu.

For Windows 7:

- ① Click on the [Start] icon-[Control Panel]-[Hardware and Sound] and [Devices and Printers] to open the [Devices and Printers] folder.
- ② Click on the existent printer and click [Print server properties] at the top of the window.

5 Click on the [Ports] tab and make sure that the [USB***] port is located in the [Ports on this server].

Record this port name because the name should be selected to install the printer driver.

6 Disconnect the USB cable from your computer.

USB Device Association

IMPORTANT!

Associate the USB device after installing the printer driver.

- 1** **Connect the printer and your computer with a USB cable.**
The USB device is automatically associated with your computer. Check the result of the USB device association in Step **2** and after.
- 2** **Activate [Device Manager].**
Click [Start] icon-[Control Panel]-[Hardware and Sound]-[Device Manager].
- 3** **Click [View] in the menu and place a checkmark in the [Show hidden devices] checkbox.**
- 4** **Click [Printers] in the list and check that the newly installed printer is registered.**
- 5** **Open [Devices and Printers] and check that the newly installed printer is registered.**

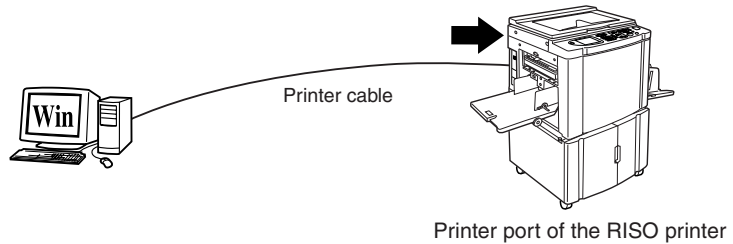
■ Connection via Other Cables

Connecting with PC

■ When connecting via a printer cable

IMPORTANT!

- Some models of the MZ7/RZ9 series do not support printer cable connection.
- Use IEEE1284 as the printer cable.



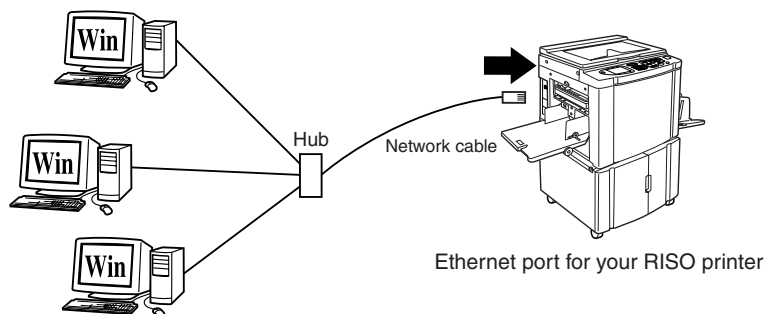
■ When connecting via a network cable

Optional network interface "RISORINC-NET" is required when the RISO printer is connected to the computer via LAN cable and used as a network printer.

In advance, read "RISORINC-NET User's Guide" (contained in RISORINC-NET SOFTWARE CD-ROM), and then connect the RISO printer to the network and configure printer network settings such as IP address. Use a commercially available Ethernet cable (10BASE-T or 100BASE-TX) appropriate for your network environment.

IMPORTANT!

Use an Ethernet cable specified with category 5 or more.



Installing the Printer Driver

This section describes how to install the RISO Printer Driver when the computer is connected to the RISO printer via the printer cable or network cable.

IMPORTANT!

- You are required to have the administrator's privilege to install the Printer Driver program in your computer.
- This Printer Driver does not support server OS or printer sharing.

1

Insert the [RISO Printer Driver] CD-ROM into your computer's CD-ROM drive.

The installer is started. When the installer is not started, double-click the [Setup (.exe)] file in CD-ROM.

For Windows 2000/Windows XP/Windows Vista(32-bit)/Windows 7(32-bit)/Windows 8(32-bit)/Windows 8.1(32-bit):

(CD-ROM):[Windows 32-bit] folder

For Windows Vista(64-bit)/Windows 7(64-bit)/Windows 8(64-bit)/Windows 8.1(64-bit):

(CD-ROM):[Windows 64-bit] folder

NOTE If the [User Account Control] dialog appears, click [Allow] (for Windows Vista) or [Yes] (for Windows 7/Windows 8/Windows 8.1).

2

Click on your language button.



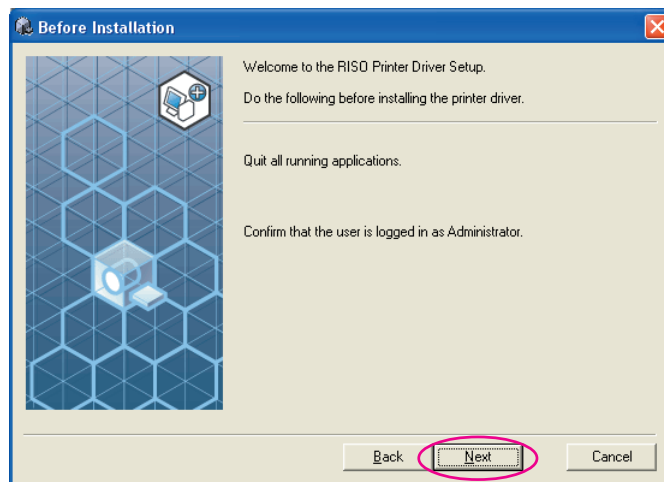
3

Click [Install].



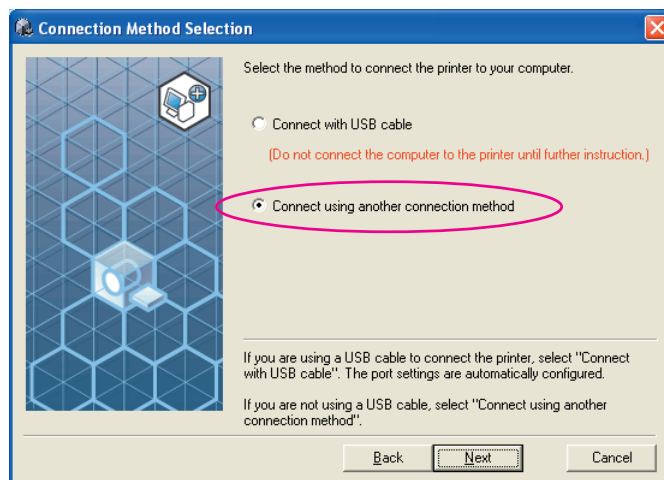
4

Click [Next].



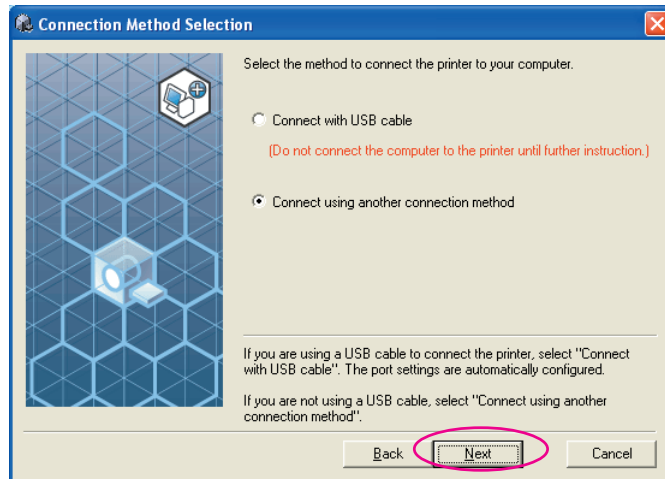
5

Select [Connect using another connection method].



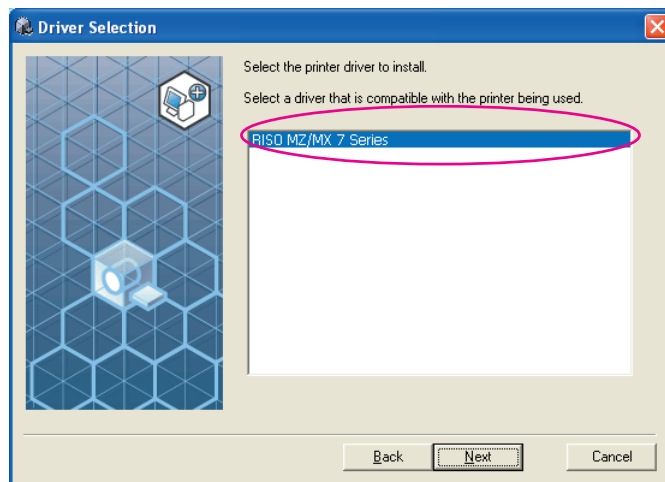
6

Click [Next].



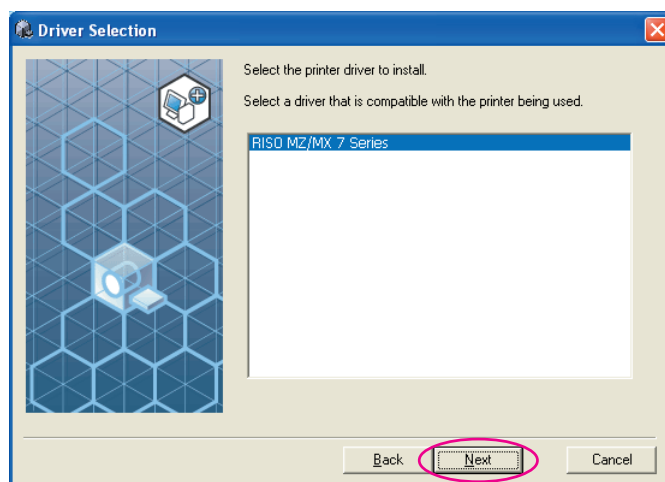
7

Select the printer name you just connected.

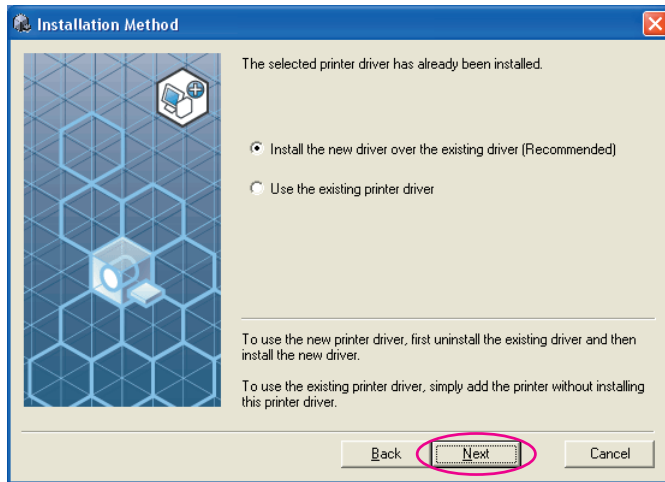


8

Click [Next].



NOTE When selected Printer Driver has already been installed, [Installation Method] dialog appears. Click [Next].

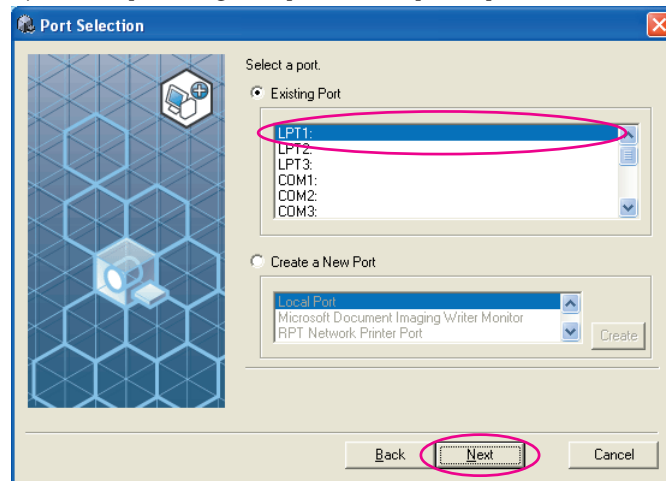


9

Select the port.

In the case of a printer cable.

1) Select [Existing Port] and then [LPT1].

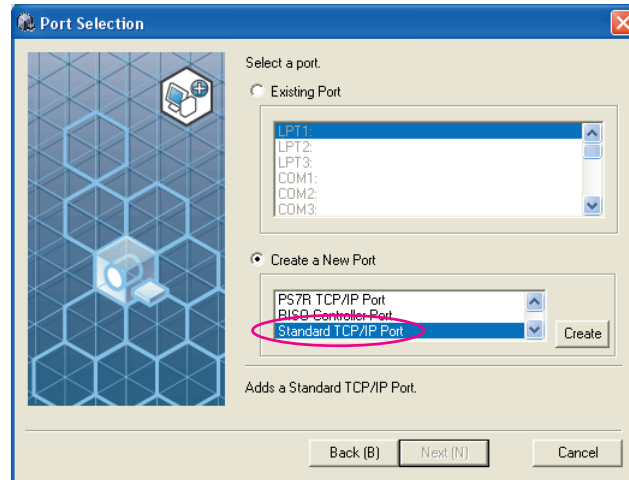


2) Click [Next].

3) Go to [Page 33](#) – **10**

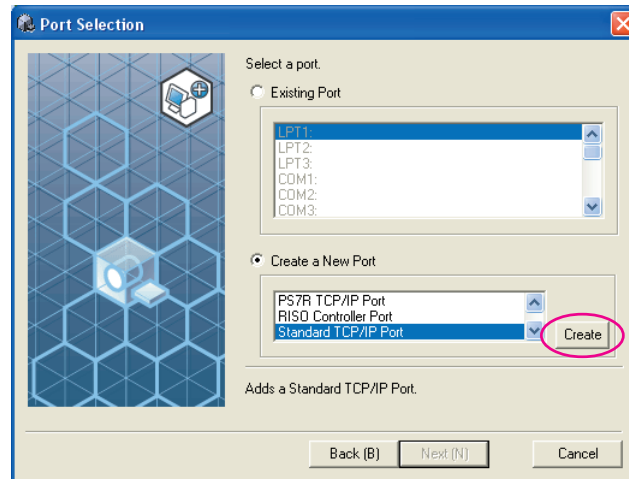
In the case of a network cable

1) Select [Create a New Port], and then [Standard TCP/IP Port].

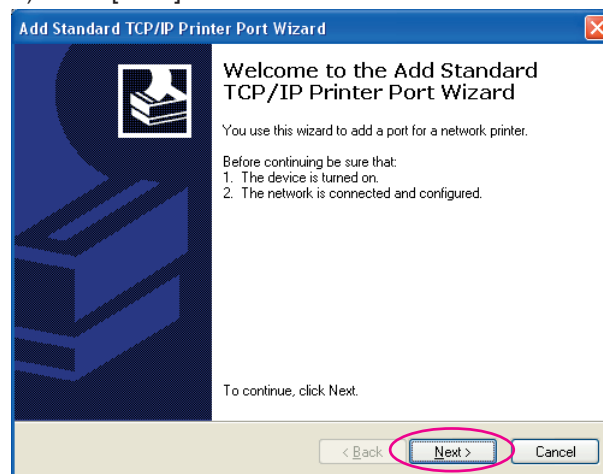


2) Click [Create].

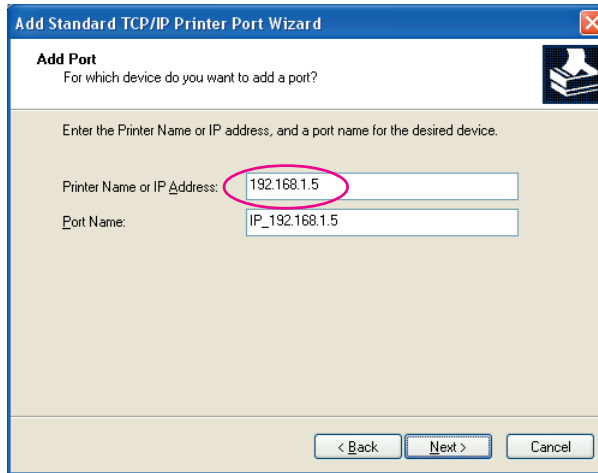
The [Add Standard TCP/IP Printer Port Wizard] dialog box appears.



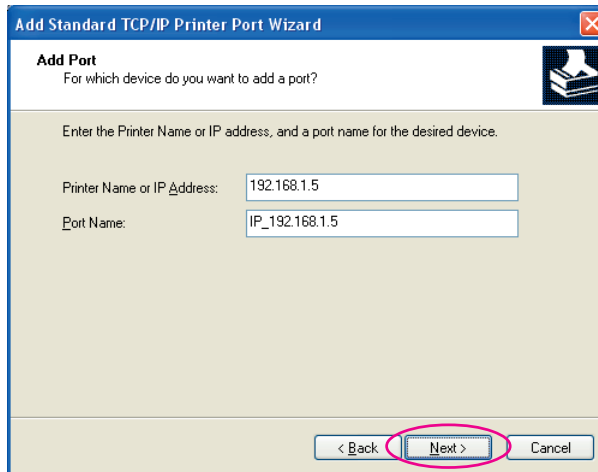
3) Click [Next].



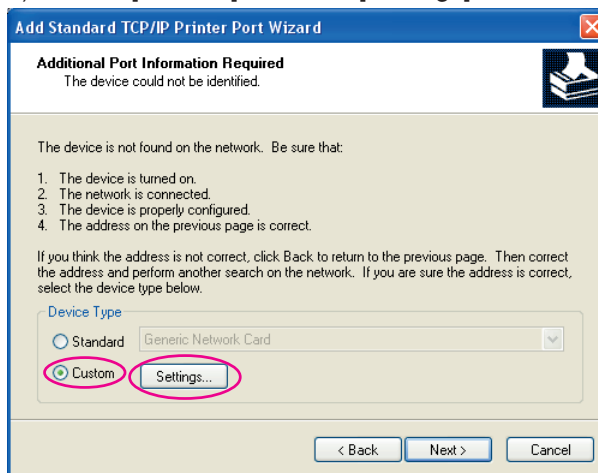
- 4) Enter the IP address of your printer.
Port name will be entered automatically.



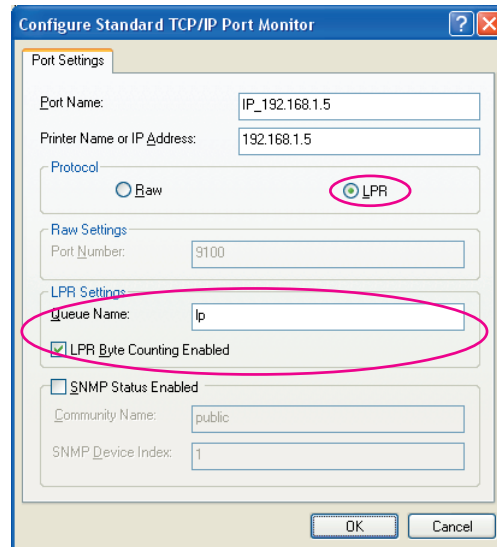
- 5) Click [Next].



- 6) Select [Custom] and click [Settings].



- 7) Select [LPR] for [Protocol], input "lp" as the [Queue Name] under [LPR Settings], and place a checkmark in the [LPR Byte Counting Enabled] checkbox.

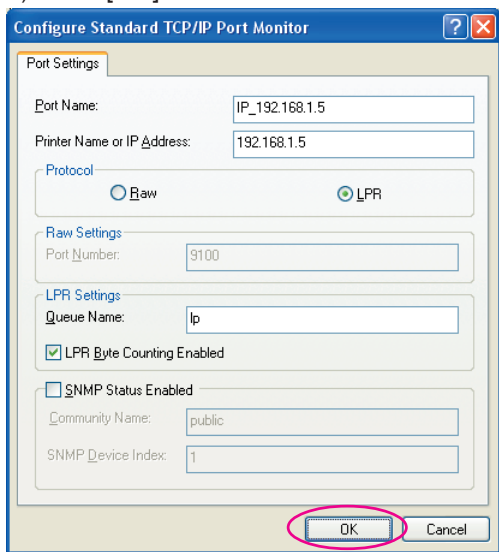


IMPORTANT!

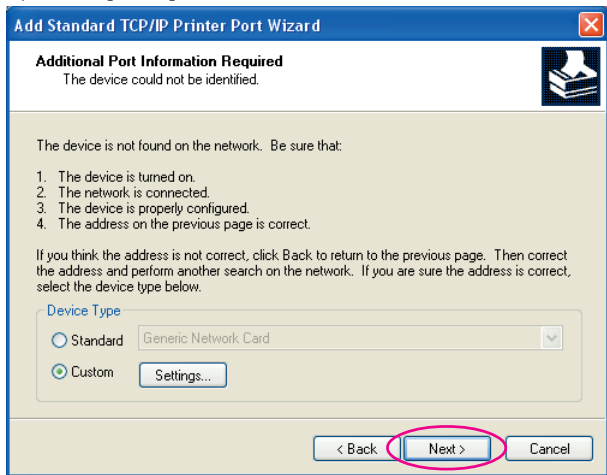
The images may not be printed properly if [LPR Byte Counting Enabled] is not selected.

NOTE This installation procedure assumes that the RISO printer is connected to the network using the dedicated network interface card, RISORINC-NET (option). When connecting to a commercial print server etc. on the network, refer to the instruction manual provided by the manufacturer. After the LPR function is added, your computer requires restarting. Therefore, be sure to store the necessary data in your computer before carrying out the operation. Follow the instruction manual of Windows 2000/Windows XP/Windows Vista/Windows 7/Windows 8/Windows 8.1 or Help for details.

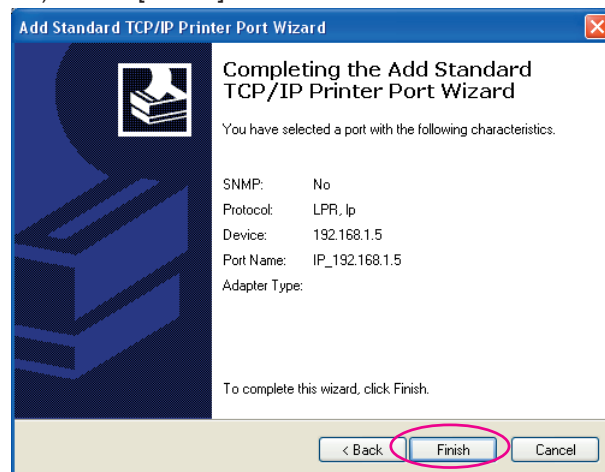
8) Click [OK].



9) Click [Next].



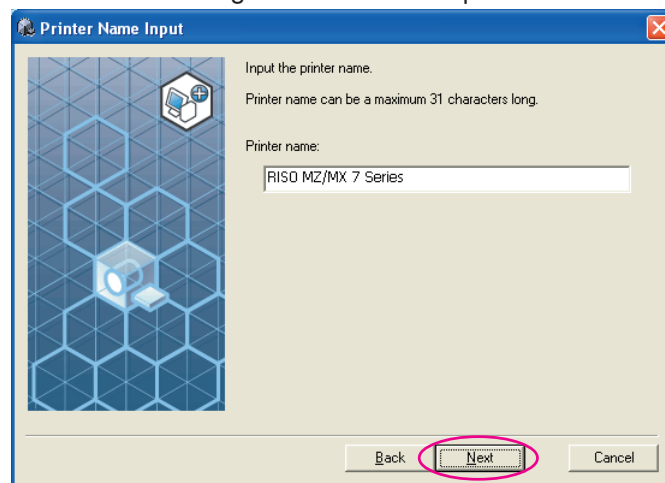
10) Click [Finish].



10

Click [Next].

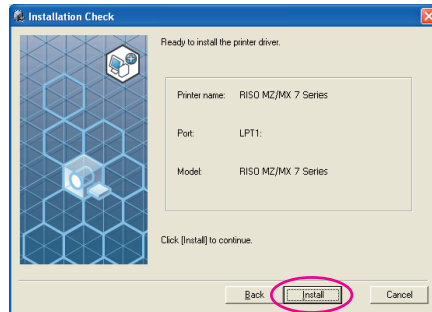
You can also change the name of the printer.



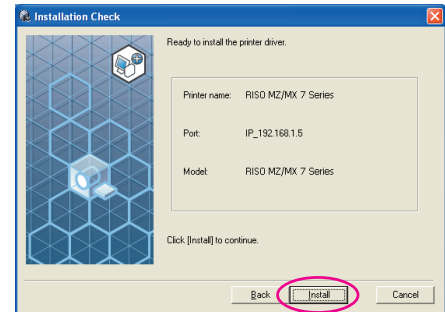
11

Click [Install].

In the case of a printer cable



In the case of a network cable



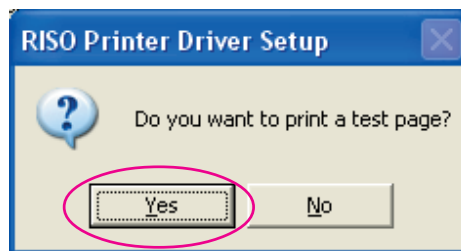
NOTE When the [Digital Signature Not Found] (for Windows 2000), [Windows Logo Approval Test] (for Windows XP) or [Windows Security] (for Windows Vista/Windows 7/Windows 8/Windows 8.1) dialog appears, continue with installation.

12

[Do you want to print a test page?] appears, then click [YES].

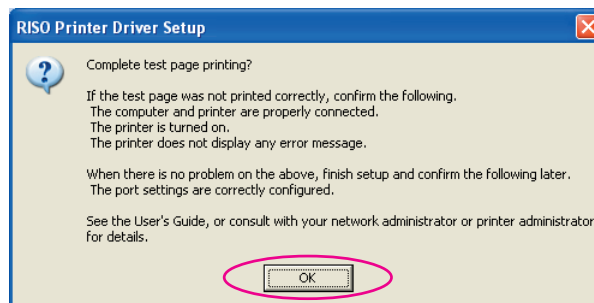
Set A4/Letter paper in the printer beforehand.

NOTE Load paper with the short edge first.



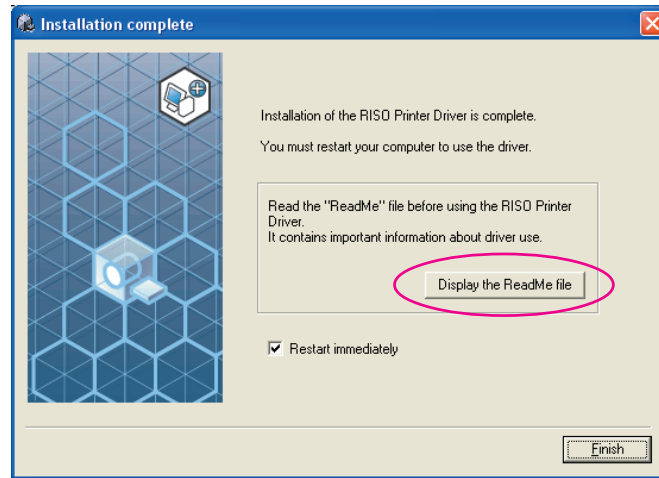
13

Check the test print was properly printed and click [OK].

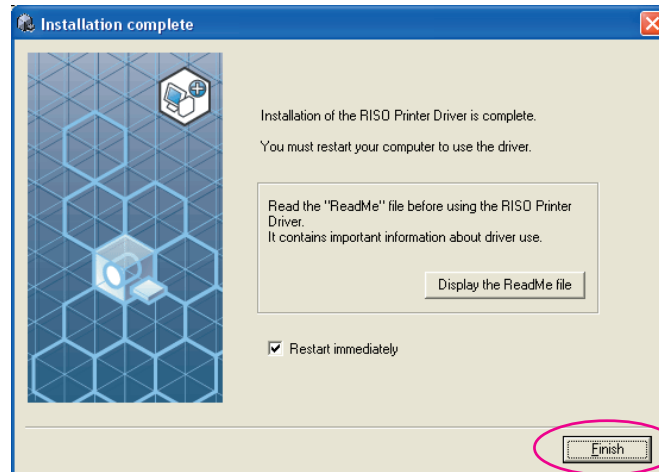


14**Click [Display the ReadMe file].**

The ReadMe file is opened. Be sure to read all the instructions and notes on it.

**15****Click [Finish].**

Be sure to restart the computer before using the Printer Driver. If you have checked [Restart immediately], the computer will be shut down and restarted when you click [Finish].

**16****Then remove the [RISO Printer Driver] CD-ROM from the CD-ROM drive of your computer.****IMPORTANT!**

Keep the CD-ROM at hand.



Uninstalling the Printer Driver

The procedure of uninstalling the Printer Driver by using the uninstaller is described here.

For Windows Vista/Windows 7/Windows 8/Windows 8.1
In the case of uninstallation using the uninstaller, the driver package cannot be deleted. When the driver package needs to be deleted, in such cases as for re-installation of the Printer Driver, uninstall the Printer Driver manually.

■ Uninstall the Printer Driver 38

Uninstall the Printer Driver

The procedure of uninstalling the Printer Driver is described here.
(Regarding the procedure of manual uninstallation, see [Page 44.](#))

IMPORTANT!

To uninstall the Printer Driver, it is necessary to log on to Windows by the account with the authority to change the system setting (administrator, etc.).

1

Insert the [RISO Printer Driver] CD-ROM into your computer.

The installer is started. When the installer is not started, double-click the [Setup (.exe) file in CD-ROM.

For Windows 2000/Windows XP/Windows Vista(32-bit)/Windows 7(32-bit)/Windows 8(32-bit)/Windows 8.1(32-bit):

(CD-ROM):[Windows 32-bit] folder

For Windows Vista(64-bit)/Windows 7(64-bit)/Windows 8(64-bit)/Windows 8.1(64-bit):

(CD-ROM):[Windows 64-bit] folder

NOTE If the [User Account Control] dialog appears, click [Allow] (for Windows Vista) or [Yes] (for Windows 7/Windows 8/Windows 8.1).

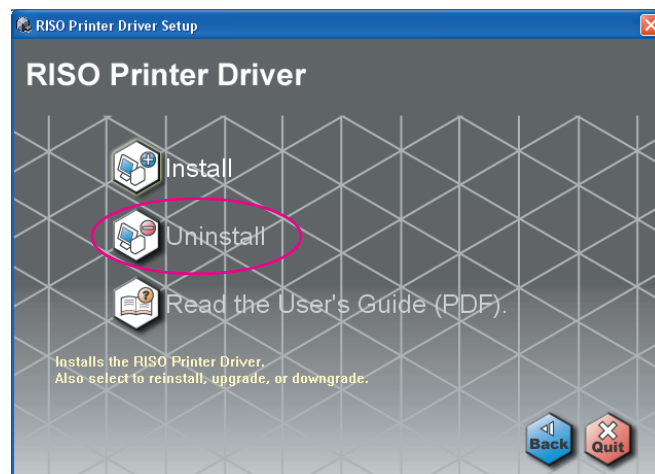
2

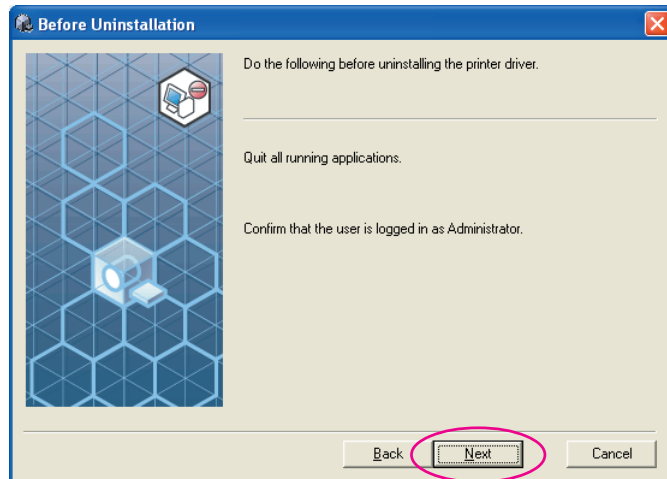
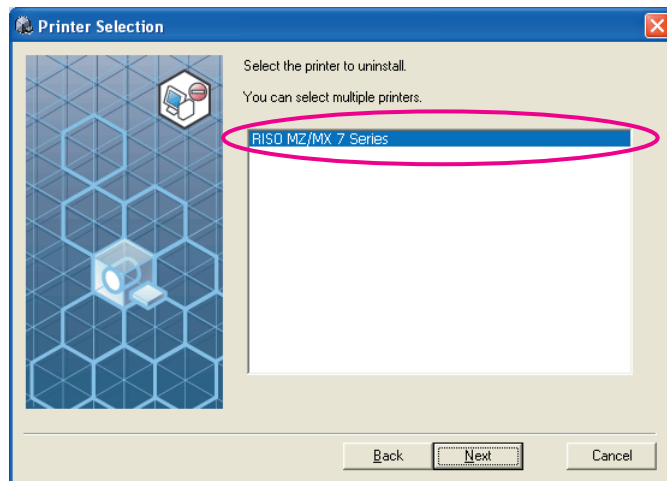
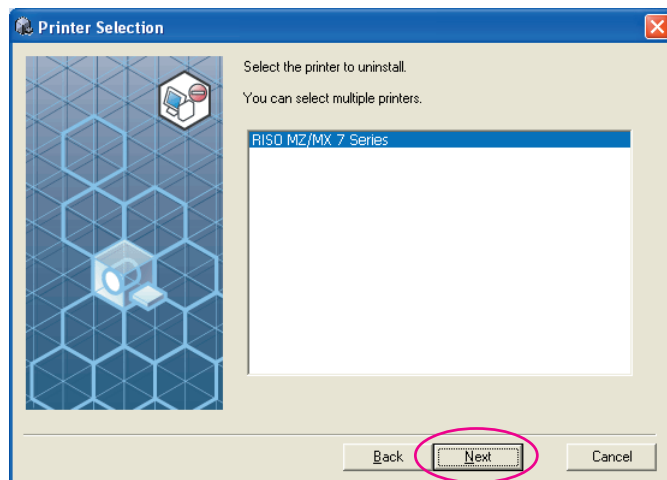
Click on your language button.



3

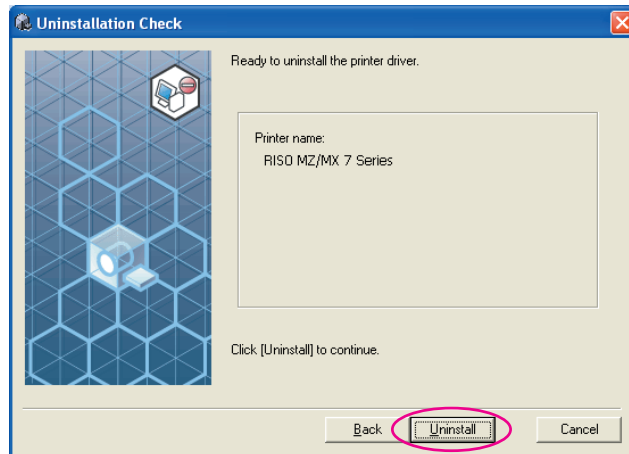
Click [Uninstall].



4**Click [Next].****5****Select the printer for which the Printer Driver needs to be uninstalled.****6****Click [Next].**

7

Click [Uninstall].

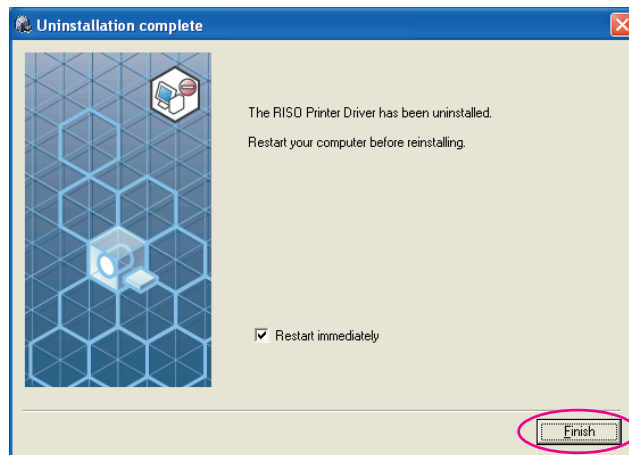


8

Click [Finish].

When the Printer Driver has been uninstalled, be sure to restart your computer.

When [Restart immediately] is checked, your computer is restarted after [Finish] is clicked.



9

Remove the [RISO Printer Driver] CD-ROM from your computer.

IMPORTANT!

Keep the removed CD-ROM at hand.

Manually installing / uninstalling the Printer Driver

The procedure of installing / uninstalling the Printer Driver without using the installer / uninstaller is described here.

For Windows 2000 / Windows XP

- **Manual installation** 42
 - Connection via USB Cable 42
 - Connection via Other Cables 43
- **Manual uninstallation** 44

For Windows Vista

- **Manual installation** 45
 - Connection via USB Cable 45
 - Connection via Other Cables 47
- **Manual uninstallation** 48

For Windows 7

- **Manual installation** 49
 - Connection via USB Cable 49
 - Connection via Other Cables 51
- **Manual uninstallation** 52

For Windows 8 / Windows 8.1

- **Manual installation** 53
 - Connection via USB Cable 53
 - Connection via Other Cables 55
- **Manual uninstallation** 56

For Windows 2000 / Windows XP

Manual installation

IMPORTANT!

- To install the Printer Driver, it is necessary to log on to Windows by the account with the authority to change the system setting (administrator, etc.).
- Server OS and printer sharing are not supported.

Connection via USB Cable

- 1** Turn the power of the printer on, and connect the USB cable to the printer.
- 2** Start your computer, and insert the [RISO Printer Driver] CD-ROM into your computer.
- 3** Connect the USB cable to your computer.
- 4** Install the Printer Driver according to the instructions on the [Found New Hardware Wizard] window.
 - ① Select [Install from a list or specified location], and [Don't search. I will choose the driver to install.], and then click [Next]. (for Windows XP)
Select the [Display a list of known drivers for this device so that I can choose a specific driver], and then click [Next]. (for Windows 2000)
 - ② Click [Have Disk], and select the inf file of the driver to install.
(CD-ROM):[Windows 32-bit]-[RISO Printer Driver]-[Win2000_XP]-[English]-RISODRV.INF
 - ③ Select the printer in use, and click [Next].
 - ④ Complete the Wizard window.
- 5** Restart your computer.
- 6** Open the printer folder, and open the properties of the printer to which the Printer Driver has been installed.

- 7** Click **[Print processor]** of the **[Details]** tab.
- 8** Select the print processor from the list.
For MZ9 series R34X8FP
For MZ7 series R34X8CP
For RZ9 series R34X8BP
For RZ5/3/2, CZ series R34X8DP
- 9** Select **[NT EMF 1.008]** from the list of default data types, and click **[OK]**.
- 10** Print the test page.

Connection via Other Cables

- 1** Start **[Add Printer Wizard]**.
- 2** Select **[Local printer]** and click **[Next]**.
- 3** Select the port.
In the case of a printer cable : Select LPT1 from the **[Use the following port]**
In the case of a network cable : Select the **[Create a new port]** and then create TCP/IP port or LPR port.
- 4** Click **[Have Disk]**, and select the inf file of the driver to install.
(CD-ROM): [Windows 32-bit]-[RISO Printer Driver]-[Win2000_XP]-[English]-RISODRV.INF
- 5** Select the printer in use and click **[Next]**.
- 6** Print the test page.
- 7** Restart your computer.

■ Manual uninstallation

- 1** Delete the printer to uninstall from the printer folder.
- 2** From the menu of the printer folder, open [File] and then [Server properties].
- 3** From the [Driver] tab, select the Printer Driver to uninstall, and click [Delete].

For Windows Vista

Manual installation

IMPORTANT!

- To install the Printer Driver, it is necessary to log on to Windows by the account with the authority to change the system setting (administrator etc.).
- Printer sharing is not supported.

Connection via USB Cable

- 1** Turn the power of the printer on, and connect the USB cable to the printer.
- 2** Start your computer.
- 3** Connect the USB cable to your computer.
- 4** In the [Found New Hardware] window, select [Locate and install driver software] and then [Don't search online].
- 5** Select [I don't have the disk. Show me other options.], and then [Browse my computer for driver software].
- 6** Insert the [RISO Printer Driver] CD-ROM into your computer.
- 7** In the [Browse] window, select the inf file of the driver to install.
For Windows Vista (32-bit): (CD-ROM):[Windows 32-bit]-[RISO Printer Driver]-[WinVista_7]*-[English]-RISODRV.inf
For Windows Vista (64-bit): (CD-ROM):[Windows 64-bit]-[RISO Printer Driver]-[WinVista_7]*-[English]-RISODRV.inf
* In the case of CD-ROM version CD112D, select [WinVista_8].
- 8** Select the printer in use and click [Next].
- 9** Restart your computer.

- 10** Open the printer folder, and open the properties of the printer to which the Printer Driver has been installed.
- 11** Click [Print processor] of the [Details] tab.
- 12** Select the print processor from the list.
In the case of a Windows Vista (32-bit):
For MZ9 series R34V8FP
For MZ7 series R34V8CP
For RZ9 series R34V8BP
For RZ5/3/2, CZ series R34V8DP
In the case of a Windows Vista (64-bit):
For MZ9 series R34V6FP
For MZ7 series R34V6CP
For RZ9 series R34V6BP
For RZ5/3/2, CZ series R34V6DP
- 13** Select [NT EMF 1.008] from the list of default data types, and click [OK].
- 14** Print the test page.

Connection via Other Cables

- 1** Start [Add Printer Wizard].
- 2** Select [Local printer], and click [Next].
- 3** Select the port.
In the case of a printer cable : Select LPT1 from the [Use an existing port]
In the case of a network cable : Select the [Create a new port] and then create TCP/IP port or LPR port.
- 4** Click [Have Disk], and select the inf file of the driver to install.
For Windows Vista (32-bit): (CD-ROM):[Windows 32-bit]-[RISO Printer Driver]-[WinVista_7]*-[English]-RISODRV.inf
For Windows Vista (64-bit): (CD-ROM):[Windows 64-bit]-[RISO Printer Driver]-[WinVista_7]*-[English]-RISODRV.inf
* In the case of CD-ROM version CD112D, select [WinVista_8].
- 5** Select the printer in use, and click [Next].
- 6** Print the test page.
- 7** Restart your computer.

■ Manual uninstallation

- 1** Delete the printer to uninstall from the printer folder.
- 2** From the menu that will be displayed by right-clicking on the margin of the printer folder, select [Run as administrator] and then [Server properties].
- 3** From the [Driver] tab, select the Printer Driver to uninstall, and click [Delete].
- 4** When the [Delete driver and package] dialog opens, select [Delete driver and driver package] to delete the driver and driver package.

For Windows 7

Manual installation

IMPORTANT!

- To install the Printer Driver, it is necessary to log on to Windows by the account with the authority to change the system setting (administrator etc.).
- Printer sharing is not supported.

Connection via USB Cable

- 1** Turn the power of the printer on, and connect the USB cable to the printer.
- 2** Start your computer.
- 3** Connect the USB cable to your computer.

IMPORTANT!
Do not proceed to the following steps until [Device driver software was not successfully installed] appears in the task tray.
- 4** Activate [Device Manager].
Click [Start] icon-[Control Panel]-[Hardware and Sound]-[Device Manager].
- 5** Right-click [Other devices]-[(Your printer name)] and then click [Update Driver Software] from the menu that appears.
- 6** Click [Browse my computer for driver software].
- 7** Insert the [RISO Printer Driver] CD-ROM into your computer.
- 8** Click [Browse], select the folder shown below and click [OK].
For Windows 7 (32-bit): (CD-ROM): [Windows 32-bit]-[RISO Printer Driver]-[WinVista_7]*-[English]
For Windows 7 (64-bit): (CD-ROM): [Windows 64-bit]-[RISO Printer Driver]-[WinVista_7]*-[English]
* In the case of CD-ROM version CD112D, select [WinVista_8].
- 9** Select the printer in use and click [Next].

- 10** Restart your computer.
- 11** Open [Control Panel]-[Hardware and Sound]-[Devices and Printers] in this order, right-click on the installed printer and click [Printer properties] from the menu that appears.
- 12** Click [Print processor] of the [Details] tab.
- 13** Select the print processor from the list.
In the case of a Windows 7 (32-bit):
For MZ9 series R34V8FP
For MZ7 series R34V8CP
For RZ9 series R34V8BP
For RZ5/3/2, CZ series R34V8DP
In the case of a Windows 7 (64-bit):
For MZ9 series R34V6FP
For MZ7 series R34V6CP
For RZ9 series R34V6BP
For RZ5/3/2, CZ series R34V6DP
- 14** Select [NT EMF 1.008] from the list of default data types, and click [OK].
- 15** Print the test page.

Connection via Other Cables

- 1** Start [Add a Printer].
- 2** Select [Add a local printer], and click [Next].
- 3** Select the port.
In the case of a printer cable : Select LPT1 from the [Use an existing port]
In the case of a network cable : Select the [Create a new port] and then create TCP/IP port or LPR port.
- 4** Click [Have Disk], and select the inf file of the driver to install.
For Windows 7 (32-bit): (CD-ROM):[Windows 32-bit]-[RISO Printer Driver]-[WinVista_7]*-[English]-RISODRV.inf
For Windows 7 (64-bit): (CD-ROM):[Windows 64-bit]-[RISO Printer Driver]-[WinVista_7]*-[English]-RISODRV.inf
* In the case of CD-ROM version CD112D, select [WinVista_8].
- 5** Select the printer in use, and click [Next].
- 6** Print the test page.
- 7** Restart your computer.

■ Manual uninstallation

- 1** Open [Control Panel]-[Hardware and Sound]-[Devices and Printers] in this order, and delete the printer to uninstall from the printer folder.
- 2** Click on the existent printer and click [Print server properties] at the top of the window.
- 3** From the [Drivers] tab, select the Printer Driver to uninstall, and click [Remove].
- 4** When the [Remove Driver And Package] dialog opens, select [Remove driver and driver package.] to delete the driver and driver package.

For Windows 8 / Windows 8.1

Manual installation

IMPORTANT!

- To install the Printer Driver, it is necessary to log on to Windows by the account with the authority to change the system setting (administrator etc.).
- Printer sharing is not supported.

Connection via USB Cable

- 1** Turn the power of the printer on, and connect the USB cable to the printer.
- 2** Start your computer.
- 3** Connect the USB cable to your computer.
- 4** Activate [Device Manager].
Open the “Apps” screen and click [Control Panel]-[Hardware and Sound]-[Device Manager].
- 5** Right-click [Other devices]-[(Your printer name)] and then click [Update Driver Software] from the menu that appears.
NOTE If your printer name is not displayed, click [Action]-[Scan for hardware changes].
- 6** Click [Browse my computer for driver software].
- 7** Insert the [RISO Printer Driver] CD-ROM into your computer.
- 8** Click [Browse], select the folder shown below and click [OK].
For Windows 8 (32-bit)/Windows 8.1 (32-bit):
(CD-ROM):[Windows 32-bit]-[RISO Printer Driver]-[Win8]*-[English]
For Windows 8 (64-bit)/Windows 8.1 (64-bit):
(CD-ROM):[Windows 64-bit]-[RISO Printer Driver]-[Win8]*-[English]
* In the case of CD-ROM version CD112D, select [WinVista_8].
- 9** Select [(Your printer name)] from the list and click [Next].
- 10** Click [Close] and restart your computer.

- 11** Open [Control Panel]-[Hardware and Sound]-[Devices and Printers] in this order, right-click on the installed printer and click [Printer properties] from the menu that appears.
- 12** Click [Print processor] of the [Advanced] tab.
- 13** Select the following print processor from the list and click it.
In the case of a Windows 8 (32-bit)/Windows 8.1 (32-bit):
For MZ9 series R34V8FP
For MZ7 series R34V8CP
For RZ9 series R34V8BP
For RZ5/3/2, CZ series R34V8DP
In the case of a Windows 8 (64-bit)/Windows 8.1 (64-bit):
For MZ9 series R34V6FP
For MZ7 series R34V6CP
For RZ9 series R34V6BP
For RZ5/3/2, CZ series R34V6DP
- 14** Select [NT EMF 1.008] from the list of default data types, and click [OK].
- 15** Print a test page from the [General] tab.
- 16** Click [OK] to close the window.

Connection via Other Cables

- 1** Start [Add a Printer].
- 2** Select [Add a local printer], and click [Next].
- 3** Select the port.
In the case of a printer cable : Select LPT1 from the [Use an existing port]
In the case of a network cable : Select the [Create a new port] and then create TCP/IP port or LPR port.
- 4** Click [Have Disk], and select the inf file of the driver to install.
For Windows 8 (32-bit)/Windows 8.1 (32-bit):
(CD-ROM):[Windows 32-bit]-[RISO Printer Driver]-[Win8]*-[English]-RISODRV.inf
For Windows 8 (64-bit)/Windows 8.1 (64-bit):
(CD-ROM):[Windows 64-bit]-[RISO Printer Driver]-[Win8]*-[English]-RISODRV.inf
* In the case of CD-ROM version CD112D, select [WinVista_8].
- 5** Select the printer in use, and click [Next].
- 6** Print the test page.
- 7** Restart your computer.

■ Manual uninstallation

- 1** Open [Control Panel]-[Hardware and Sound]-[Devices and Printers] in this order, and delete the printer to uninstall from the printer folder.
- 2** Click on the existent printer and click [Print server properties] at the top of the window.
- 3** From the [Drivers] tab, select the Printer Driver to uninstall, and click [Remove].
- 4** When the [Remove Driver And Package] dialog opens, select [Remove driver and driver package.] to delete the driver and driver package.

RISO